

Tour No. 4 City of Bath



Prior Park

Acknowledgement to T. C. Leaman, Bath.

Travelling by coach to Bath, the tour of the city begins at Grand Parade. It includes visits to Orange Grove, North Parade (scene of Sheridan's comedy "The Rivals"), Masonic Hall (once a theatre where Sarah Siddons found fame), Abbey Church House (Roundhead headquarters during the Civil War in XVII Century), Theatre Royal, Royal Mineral Water Hospital, Camden Crescent, The Circus, Brock St. (Disraeli lived at No. 5), Royal Crescent (built in 1774, a notable example of Palladian Architecture—"Home" of many fictional characters including Mr. Pickwick and Sir Percy Blakeney), St. James Square (at No. 35 Dickens introduced Longfellow to Walter Landor the "Grand Old Man of Bath"), Queen Square, Beechen Cliff with its magnificent view of the city, Prior Park (now a Catholic College), Pulteney Bridge.

Depart (Anchor Road) 1.40 p.m.
Home 5.00 p.m.

FARE 5/-

BRISTOL TRAMWAYS offers you . .

- ★ STAGE CARRIAGE SERVICES
- ★ LONG DISTANCE COACH SERVICES
- ★ TOURS AND EXCURSIONS
- ★ PRIVATE HIRE FACILITIES

Seats for all tours may be booked at any of the following Offices and Agencies:

Booking & Enquiry Office: 1/3 St. Augustine's Place, Bristol, 1.

Eastville Junction Post Office: 450, Stapleton Road, Bristol, 5.

Northville Travel Agency: 557, Filton Avenue, Bristol, 7.

Milton's Library: 3, New Station Road, Fishponds.

Young's (Newsagent): 4, Downend Road, Downend.

Hobb's (Newsagent): 9, High Street, Westbury-on-Trym.

Lockleaze Post Office: 6, Gainsborough Square, Lockleaze.

Branches at:

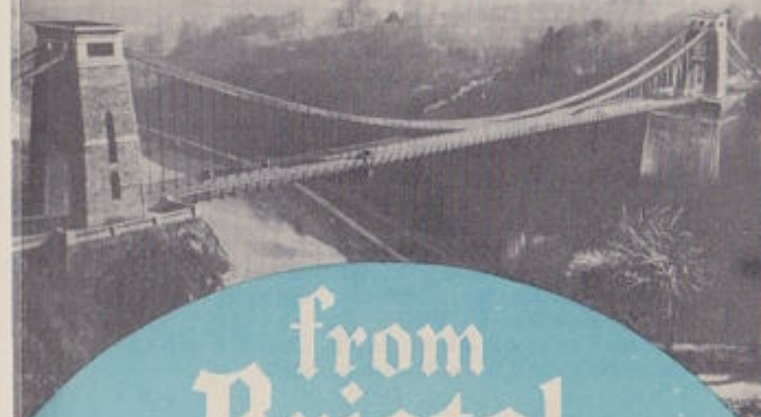
BATH · CHELTENHAM · GLOUCESTER
STROUD · SWINDON · WESTON-SUPER-MARE

BRISTOL TRAMWAYS & CARRIAGE CO. LTD.

Conducted Tours



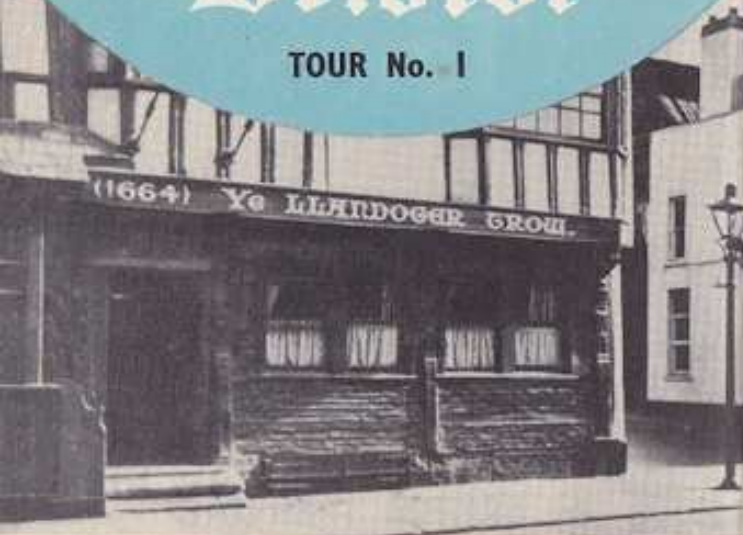
by BRISTOL TRAMWAYS



from Bristol

Bristol

TOUR No. 1



Acknowledgement to F. G. Warne Ltd.

Llandoger Trow

AFTERNOON TOUR

The route covers 26 miles and includes Cathedral, Lord Mayor's Chapel, King Street (Theatre Royal—1766, Cooper's Hall, Llandoger Trow—1664), Queen Square, St. Mary Redcliffe, Shakespeare Inn—1636, Temple Church (leaning Tower), Coach and Horses—1456, Hotwells, Clifton Down (Promenade, Suspension Bridge, Observatory, Camera Obscura), Royal York Crescent, Victoria Rooms, Bristol Grammar School, University, Clifton College, Zoological Gardens, Sea Walls, Durdham Down, Filton (Brabazon Hangar and Runway), Frenchay Common, Stapleton, St. James Park, Broadmead (Wesley Chapel—1739), Site of Bristol Castle, All Saints Church, Christ Church Clock, St. John's Arch, Corn Exchange Nails.

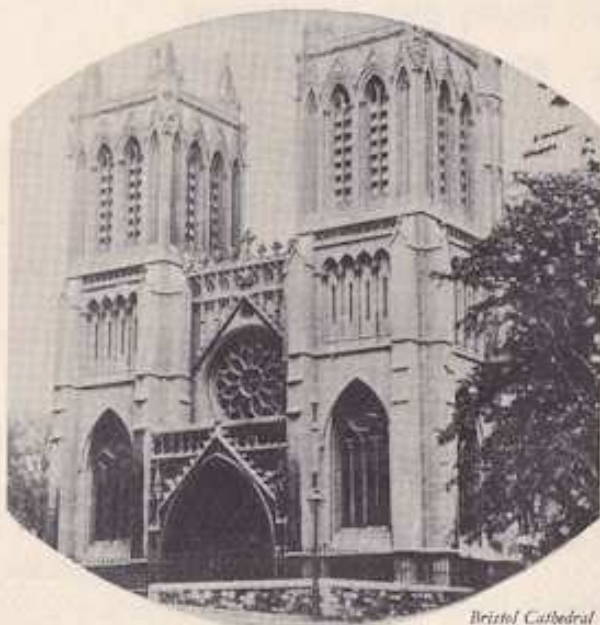
Depart (Anchor Road) 2.30 p.m.
Home 5.00 p.m.

FARE 3/-

TOUR No. 2

EVENING TOUR

This is a shorter tour covering 18 miles and the route includes Cathedral, Lord Mayor's Chapel, King Street (Theatre Royal—1766, Cooper's Hall, Llandoger Trow—1664), Queen Square, St. Mary Redcliffe, Shakespeare Inn—1636, Temple Church (leaning Tower), Coach and Horses—1456, Hotwells, Clifton Down (Promenade, Suspension Bridge, Observatory,



Bristol Cathedral

Camera Obscura), Royal York Crescent, Victoria Rooms, Bristol Grammar School, University, Clifton College, Zoological Gardens, Sea Walls, Sneyd Park, Sea Mills Estate, Westbury, St. James Park, Broadmead (Wesley Chapel—1739), Site of Bristol Castle, All Saints Church, Christ Church Clock, St. John's Arch, Corn Exchange Nails.

Depart (Anchor Road) 6.30 p.m.
Home 8.30 p.m.

FARE 2/-

Bristol

TOUR No. 3

This tour includes visits to Greville Smythe Park, Blaise Castle, Canford Park, Eastville Park, Snuff Mills, Duchess Gate and Brandon Hill.

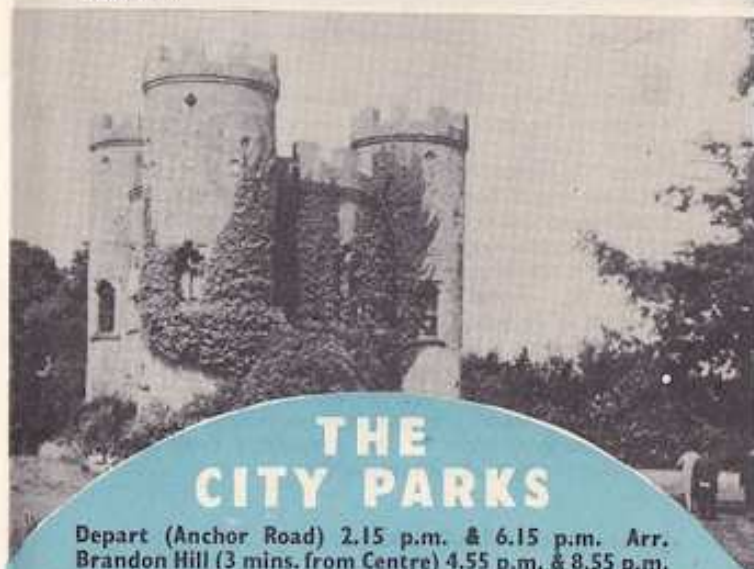
At Blaise Castle a halt of 30 mins. is made, enabling passengers to view the lovely grounds and the hothouses where all the plants for the City's Gardens and Parks are raised.

Other points of interest are the rose garden at Canford Park and the Old Mill Wheel at Snuff Mills.

Brandon Hill, which ends the tour, is of course the site of the Cabot Tower, from the top of which the whole of the City of Bristol may be seen.

Halts are made at Greville Smythe Park (10 mins.), Blaise Castle (30 mins.), Canford Park (15 mins.) and Snuff Mills (15 mins.).

Blaise Castle



THE CITY PARKS

Depart (Anchor Road) 2.15 p.m. & 6.15 p.m. Arr.
Brandon Hill (3 mins. from Centre) 4.55 p.m. & 8.55 p.m.

FARE 2/6